

Fig. a. Paratype of *Chascanopsetta galathea*, std.l. 122 mm. St. No. 202. (An example of column B, Table 3).
 Fig. b. Paratype of *Chascanopsetta galathea*, std.l. 148 mm. St. No. 202. (An example of column C, Table 3).
 Fig. c. Holotype of *Chascanopsetta galathea*, std.l. 144 mm. St. No. 202. (An example of column D, Table 3).

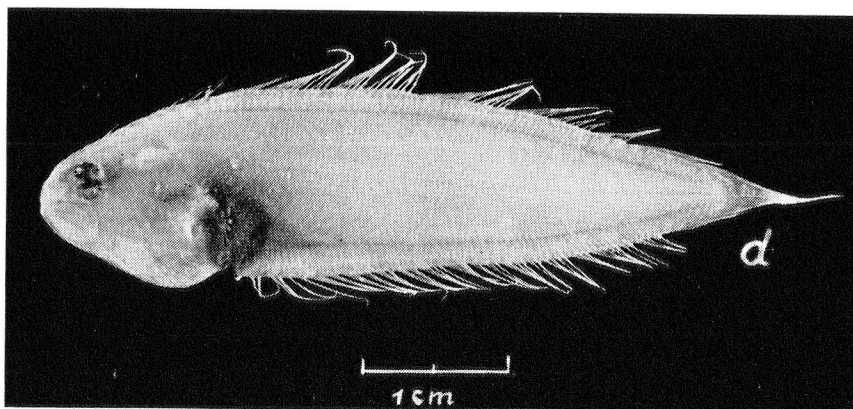


Fig. d. *Symphurus holothuriae*, std.l. 45 mm. St. No. 436.