

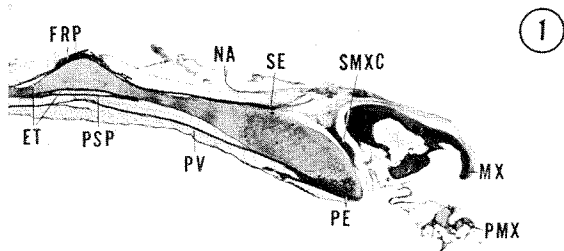
Lettering to Figure 1 and to Plate I and II

APTO	autopterotic	IP	intramembranous extension	PLA	planum antorbitale
ASPH	autosphenotic		from the processus	PMX	premaxillary
B VII	ramus buccalis VII		postorbitalis	PMXC	premaxillary cartilage
BP	basal plate	LET	lateral ethmoid	PPC	palatine part of the palato- quadrate cartilage
BOC	basioccipital	M V	ramus mandibularis V	PRA	processus ascendens of the premaxillary
CR	cartilaginous cranial roof	MEC	mesethmoid cartilage	PRO	prootic
DA	dorsal aorta	MPT	metapterygoid	PSP	parasphenoid
DSPH	dermosphenotic	MPTO	membranopterotic	PT	posttemporal
ECPT	ectopterygoid	MX	maxillary	PV	prevomer
ENPT	endopterygoid	MX V	ramus maxillaris V	QPC	quadrate part of the palato- quadrate cartilage
EOC	exoccipital	MY	myodome	QU	quadrate
EPO	epiotic	NA	nasal	RM	rectus eye muscle
ET	ethmoid	NL	nervus lateralis accessorius?	RO	rostrum of the ethmoid plate
EY	eye	O V	ramus ophthalmicus superficialis V	SC	sclera
FR	frontal	O VII	ramus ophthalmicus superficialis VII	SE	supraethmoid
FRP	fronto-parietal	OM	oblique eye muscle	SI	interorbital septum
GG	Geniculate ganglion	P ₁₋₃	pharyngobranchials 1-3	SMX	supramaxillary
GL	Gasserion-lateralis complex	P VII	ramus palatinus VII	SMXC	submaxillary cartilage
H VII	truncus hyomandibularis VII	PA	parietal	SOC	supraoccipital
HM	hyomandibular	PAC	parethmoid cornu	SOCA	supraorbital canal
IA	intramembranous extension from the autopterotic	PAL	palatine	TCO	trabecula communis
IC	intercalary	PB	prootic bridge	TM	taenia tecti medialis
IE	intramembranous extension from the epiotic	PE	preethmoid	I	nervus olfactorius
IO ₁₋₄	infraorbitals 1-4	PEC	preethmoid cornu	II	nervus opticus
		PFR	prefrontal		

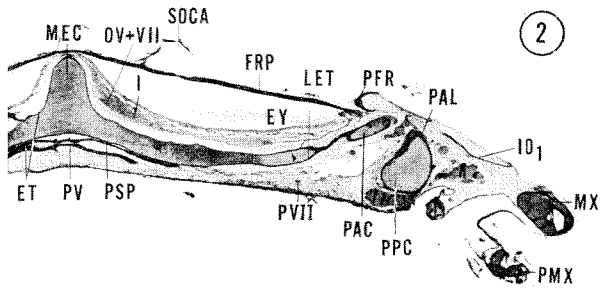
PLATE I

Ipnops murrayi

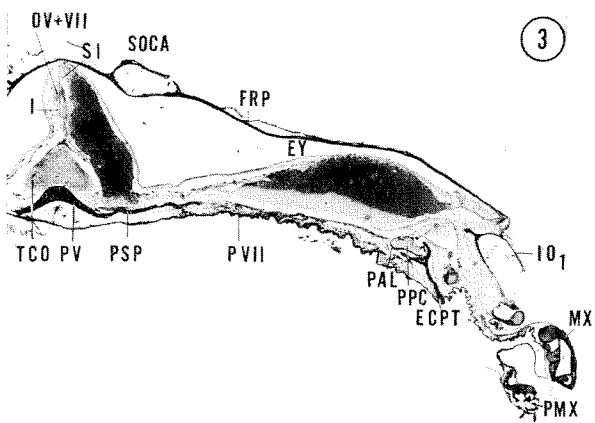
- Fig. 1: Transverse section through the ethmoid region. 10 μ section. Hematoxylin-eosin. Specimen A.
- Fig. 2: Transverse section from the transition between the ethmoid region and the orbital region. 10 μ section. Hematoxylin-eosin. Specimen A.
- Fig. 3: Transverse section through the anterior part of the orbital region. 10 μ section. Hematoxylin-eosin. Specimen A.
- Fig. 4: Transverse section through the posterior part of the orbital region. 10 μ section. Hematoxylin-eosin. Specimen A.
- Fig. 5: Transverse section through the anterior part of the otical region. 10 μ section. Hematoxylin-eosin. Specimen A.
- Fig. 6: Transverse section through the posterior part of the otical region. 10 μ section. Hematoxylin-eosin. Specimen A.
- Fig. 7: Transverse section through the occipital region. 10 μ section. Hematoxylin-eosin. Specimen A.
- For the exact positions of the transverse sections, see Fig. 1.



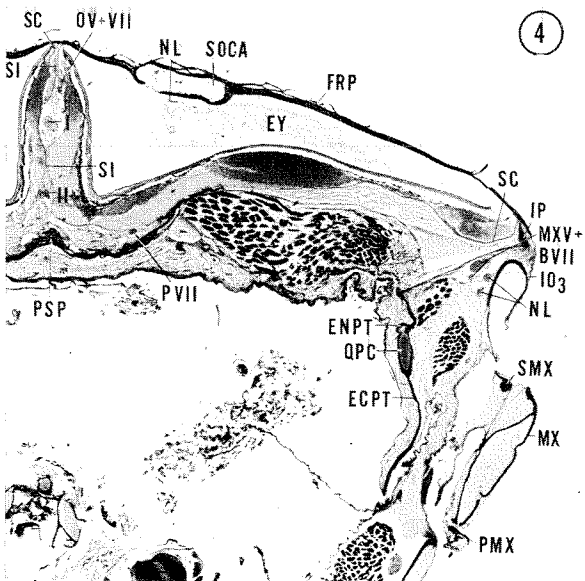
1



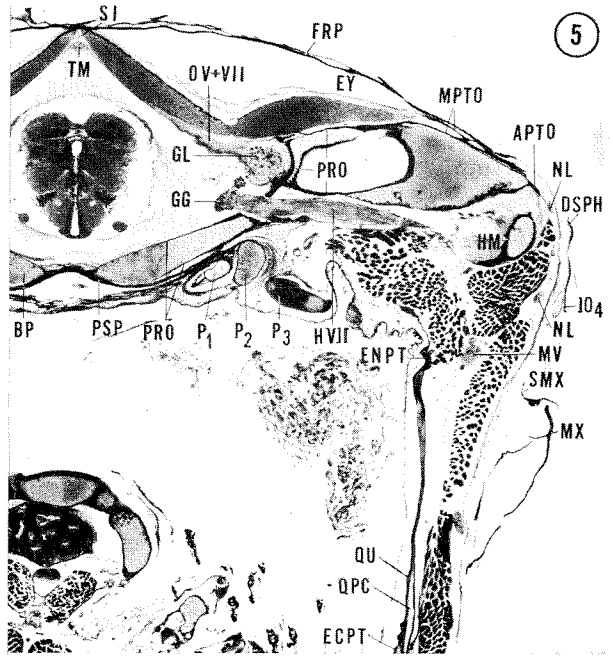
2



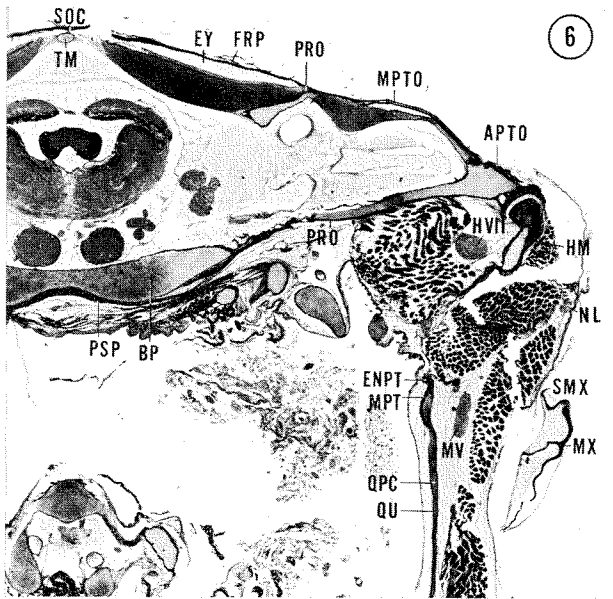
3



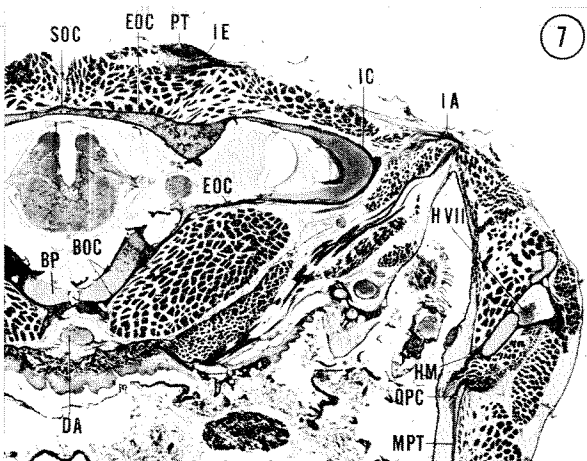
4



5



6

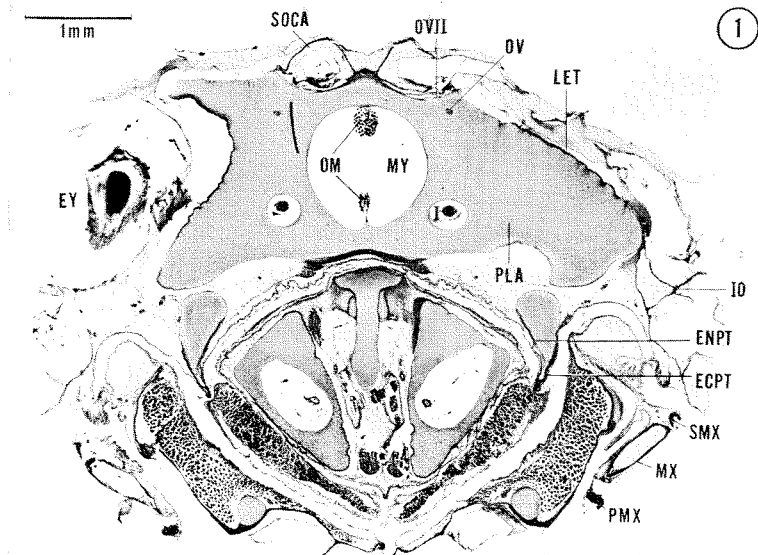


7

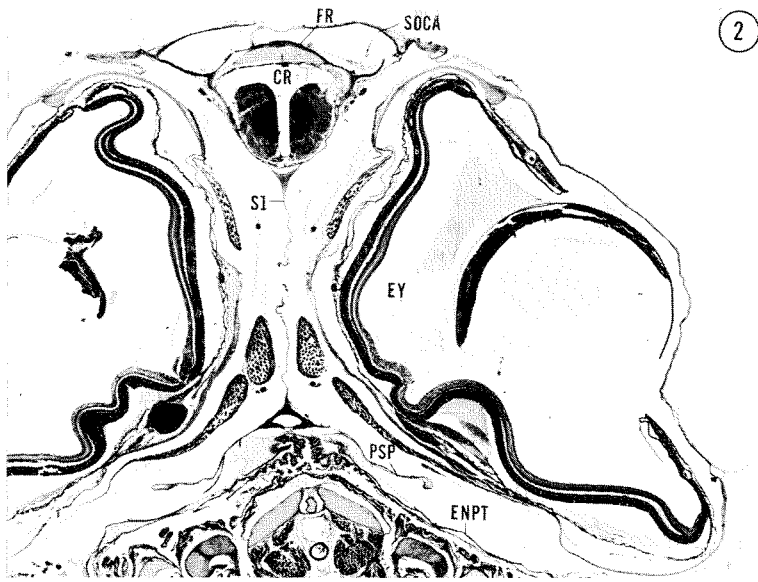
PLATE II

Chlorophthalmus agassizi

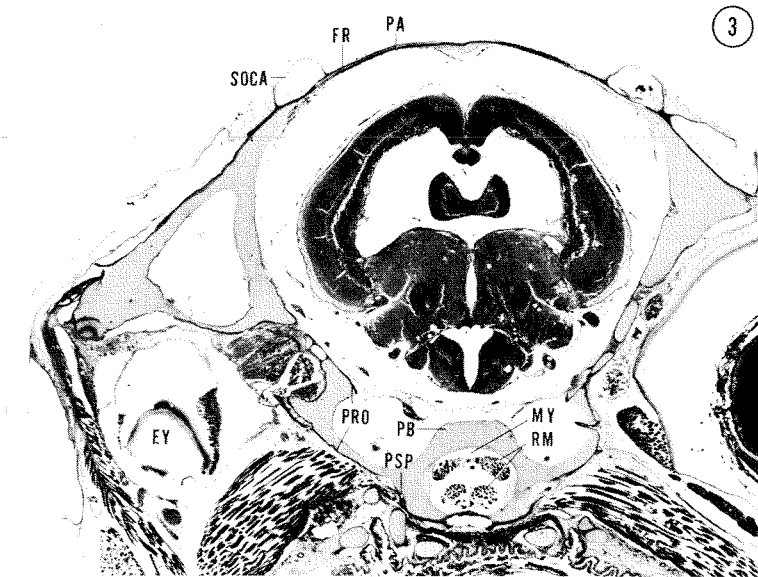
- Fig. 1: Transverse section from the transition between the ethmoid region and the orbital region. 10 μ section. BODIAN's protargol method.
- Fig. 2: Transverse section through the orbital region. 10 μ section. Hematoxylin-eosin.
- Fig. 3: Transverse section through the anterior part of the otic region. 10 μ section. Hematoxylin-eosin.



1



2



3