

Afrixalus sylvaticus Schiøtz

Afrixalus sylvaticus Schiøtz 1974. Vidensk. Meddr dansk Naturh. Foren. 137: 17 (Kwale, Kenya).

Type in Copenhagen.

Definition. – A small *Afrixalus* (♂♂ 18–21 mm, ♀♀ 22–24 mm) from the forest in East Africa with a light dorsum and a dark, broad, irregular transversal lumbar band and a light tibia with a dark band. Males without dorsal spines. The voice consists of a series of clicks.

Description. – Some of the dimensions can be seen from table 4. Body broad and flat. Eyes large and protruding. Horizontal diameter of eye much larger than length of snout. Interorbital space of same size as upper eyelid. Tympanum invisible. Rudiment of web between fingers. Feet with $\frac{1}{2}$ joint free of web on 5th toe, 1 on 4th. A small, flat and indistinct metatarsal tubercle present. Pattern as fig. 93 in light and dark brown.

Colour in life. – Dorsal ground colour a dark brown with a pattern in light golden, leaving a broad lumbar band and spots in the shoulder region. The golden "cover" is broken in many specimens by spots or vermiculations in the dark ground colour. The dark ground colour is beset with minute white specks. Tibia light with a dark transversal band, ventrum white. Throat white in females, yellow in males. Feet, toes and discs yellow.

Colour after preservation. – As in life, but throat, feet, toes and discs white.

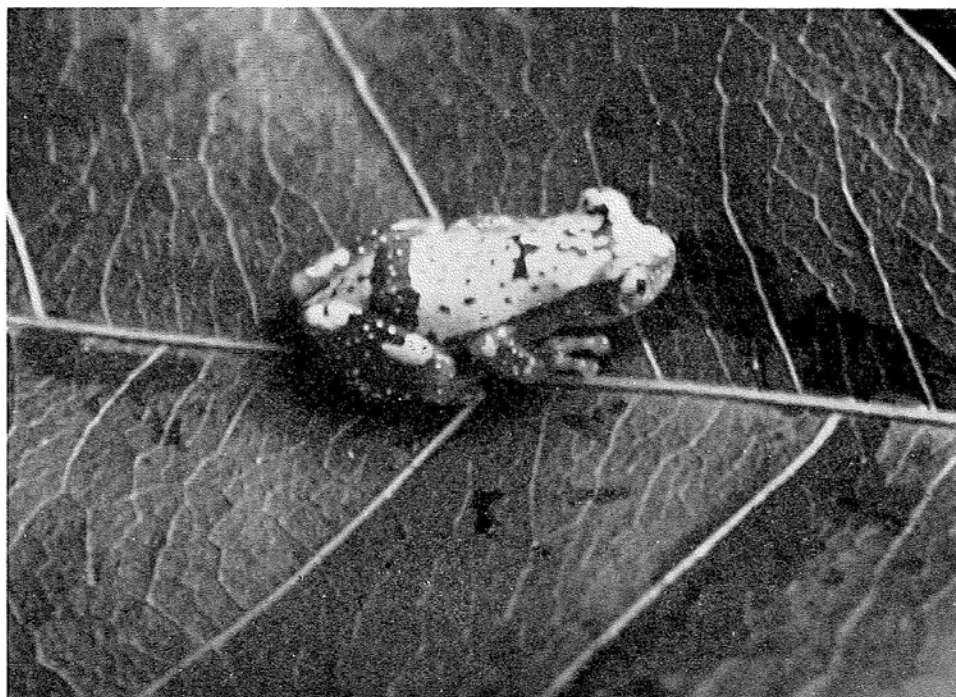
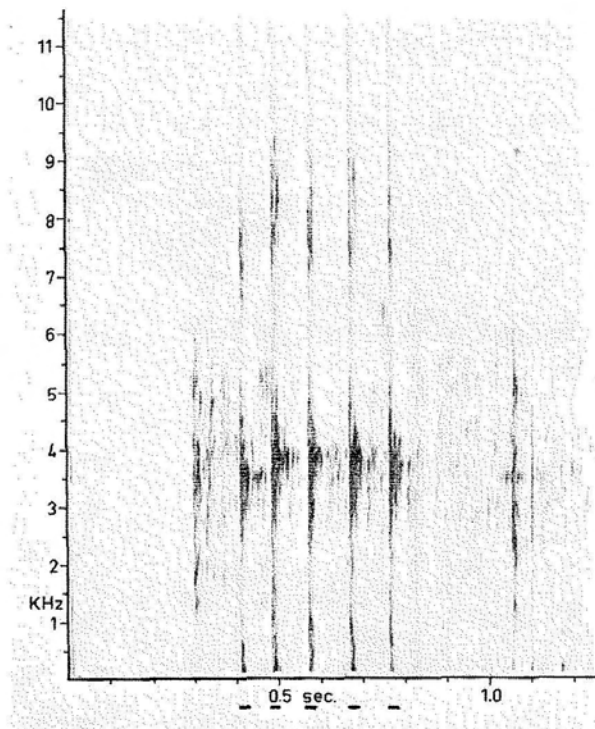


Fig. 93. *Afrixalus sylvaticus* (Kwale).

Fig. 94. Reproductive call of *A. sylvaticus* (Kwale). Wide.



Secondary sex characters. — The males are smaller than the females and have a subgular vocal sac with a rather small protective flap. The males have no spines on the dorsal surfaces.

Voice. — The voice (fig. 94) consists of a short series of distinct clicks with an indistinct frequency-intensity maximum at 4000–4500 cps and a rate of about 12 per sec.

Biological remarks. — The type sample of *A. sylvaticus* was collected in a dense forest locality. The species was abundantly present sitting on leaves of bushes growing in and around a water-filled depression on the forest floor.

Distribution. — Only known with certainty from the type locality but some halfgrown specimens collected by Keith further north along Tana River in Kenya may belong to the same species (fig. 92).

Table 4. Some body dimensions of *Afrivalus*, in tenths of millimeters.

Species	no.	sex	loc.	sn.-vent	tibia	eye horiz.	eye-nare
<i>o. congicus</i>	6916	♂	Budongo F	289	128	34	29
—	6915	♂	—	285	135	34	28
—	6914	♂	—	280	125	35	27

(cont.)

(Table 4, cont.)

Species	no.	sex	loc.	sn.-vent	tibia	eye horiz.	eye-nare
<i>o. congicus</i>	4034	♂	Budongo F.	295	139	38	30
—	6917	♀	—	326	147	42	37
—	4036	♀	—	355	155	43	29
—	8222	♂	Entebbe	290	129	37	30
<i>quadrivittatus</i>	7678	♂	Toro G. R.	243	98	28	18
—	7659	♂	—	236	98	28	20
—	7663	♂	—	239	104	28	18
—	7673	♀	—	236	99	30	29
—	9011	♂	Gombe Stream	260	110	34	28
—	9012	♂	—	255	115	34	28
—	9013	♀	—	267	116	35	25
<i>fornasini</i>	6893	♂	Tiwi	301	143	43	33
—	7092	♂	—	320	162	43	29
—	7380	♂	—	286	145	44	28
—	7091	♀	—	305	147	35	30
—	8750	♂	Selous G. R.	344	161	39	30
—	8752	♂	—	315	149	36	29
<i>brachynemis</i>	7812	♂	Muheza	169	76	23	16
—	7820	♂	—	149	66	24	15
—	4157	♂	—	160	67	22	15
—	8732	♂	Kachalola	210	85	27	18
—	8731	♂	—	202	77	26	18
<i>uluguruensis</i>	9051	♂	Dabaga	248	112	39	20
—	9039	♂	—	246	105	30	24
—	9043	♂	—	224	105	38	23
—	9042	♀	—	270	127	35	25
—	9046	♀	—	285	123	39	28
—	MCZ						
—	13315	♂	Vituri	260	119		
—	MCZ						
—	13311	♀	—	285	136		
—	MCZ						
—	13316	♀	—	281	135		
—	4184	♂	Amani	224	106	35	23
—	3869	♂	—	228	113	35	20
—	6817	♂	—	236	116	36	20
—	7995	♀	—	212	109	35	22
—	7991	♀	—	240	115	37	25

(cont.)

(Table 4, cont.)

Species	sex	no.	loc.	sn.-vent	tibia	eye horiz.	eye-nare	
<i>p. pygmaeus</i>		7169	♂	Tiwi	190	80	27	20
—		7172	♂	—	198	85	26	20
—		7170	♂	—	203	87	27	16
—		7114	♀	—	226	95	30	22
—		9447	♂	Dabaga	215	80	27	16
—		8749	♂	Kingupira	198	87	26	19
<i>p. septentrionalis</i>	A 367	♂	Voi	209	83	25	15	
—	A 367	♂	—	205	80	27	18	
—	Type A 938	♂	Mtito Andei	201	80	29	16	
—	—	♂	—	190	70	24	15	
—	—	♂	—	204	75	25	18	
<i>sylvaticus</i>	3862	♂	Kwale	191	85	29	17	
—	3861	♂	—	197	85	25	17	
—	4010	♂	—	188	80	24	17	
—	8105	♂	—	203	84	24	17	
—	8106	♀	—	235	90	29	18	
—	8104	♀	—	225	87	29	20	